

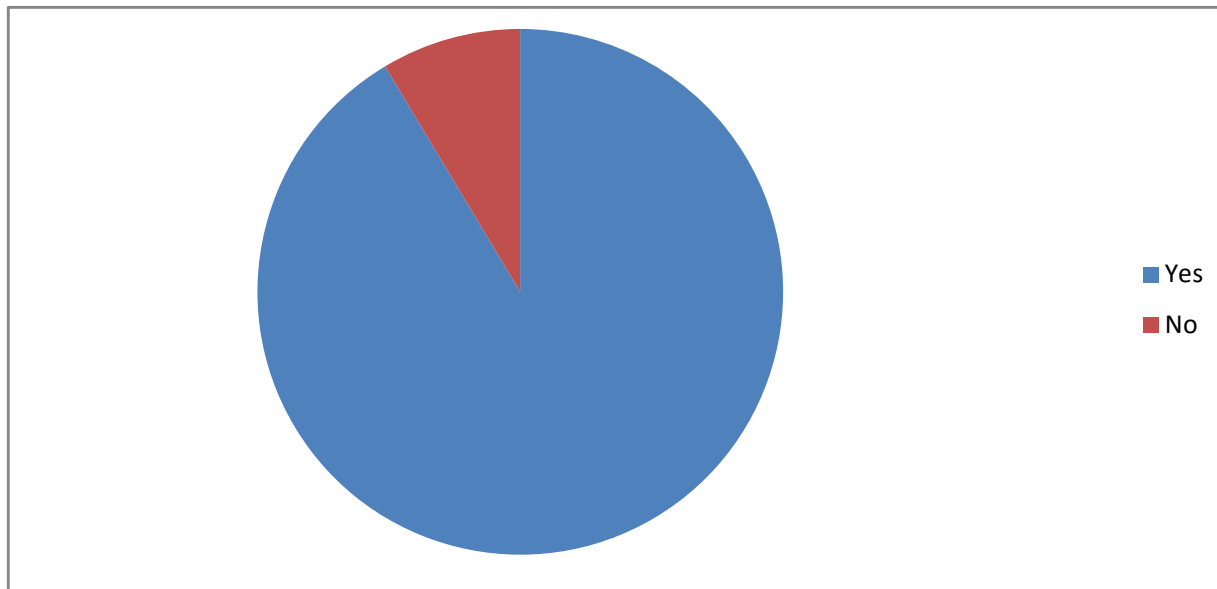
## Students Satisfaction Survey : 314 responses received for 2018-19

1. Year of Course enrolment/completion at Yogi Vemana University?

Enrolment	Completion
2017-2018	2018-2019

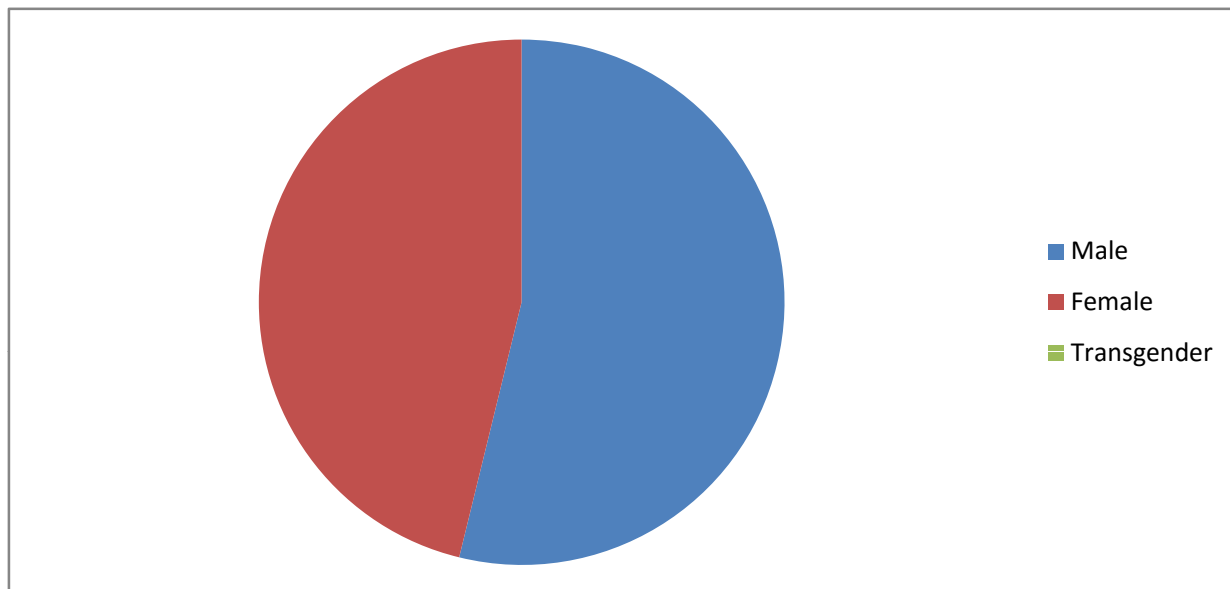
2. Confirm this is the first and only time you answer this survey?

Yes	No
287	27



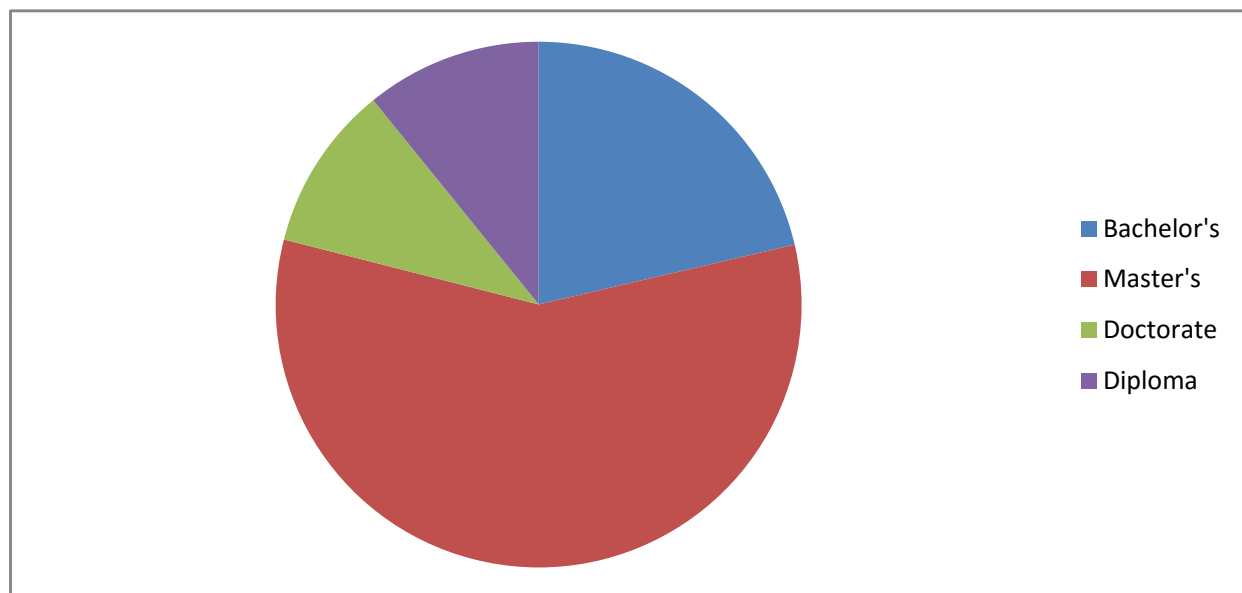
### 3. Gender?

Male	Female	Transgender
169	145	0



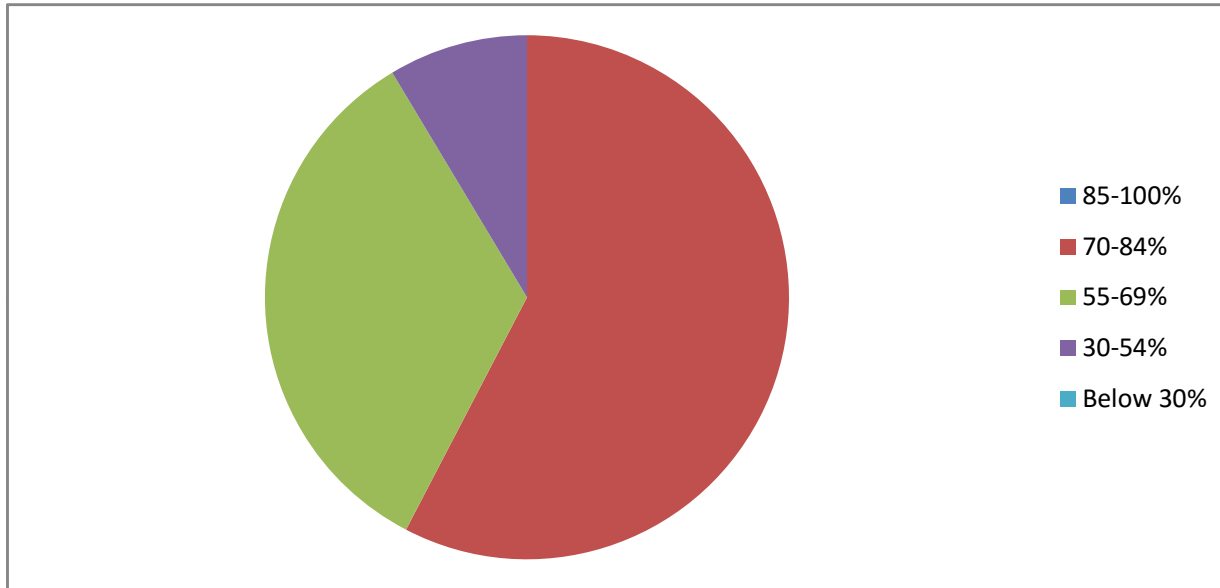
#### 4. Degree studied in the Univesity?

Bachelor's	Master's	Doctorate	Diploma
67	181	32	34



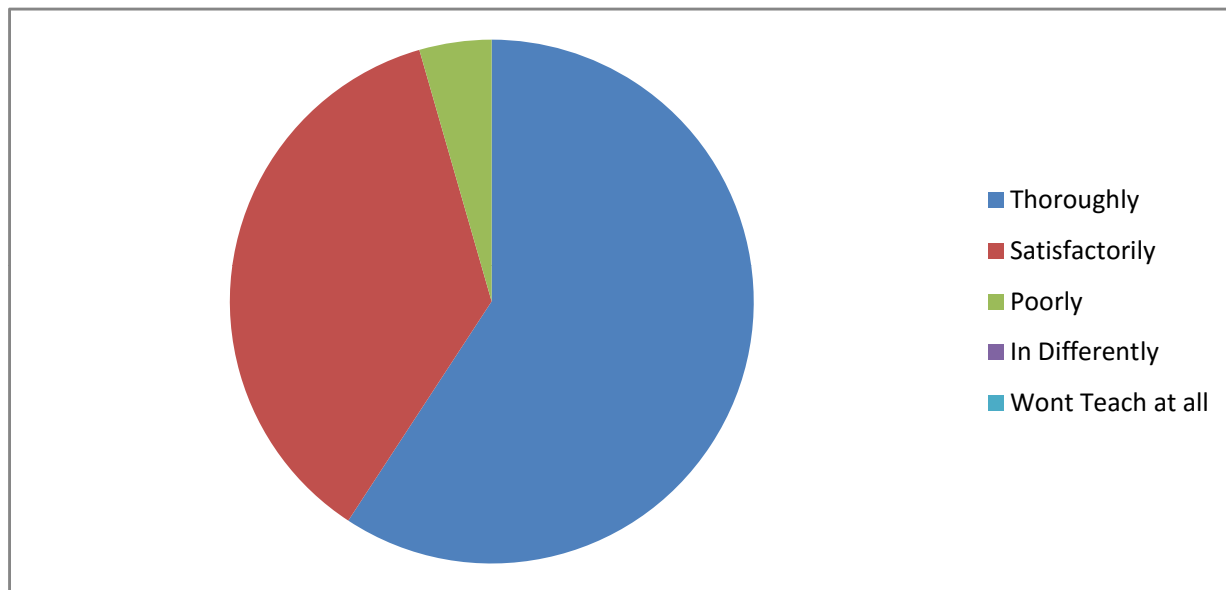
5. How much syllabus covered in the class?

85-100%	70-84%	55-69%	30-54%	Below 30%
181	106	27	0	0



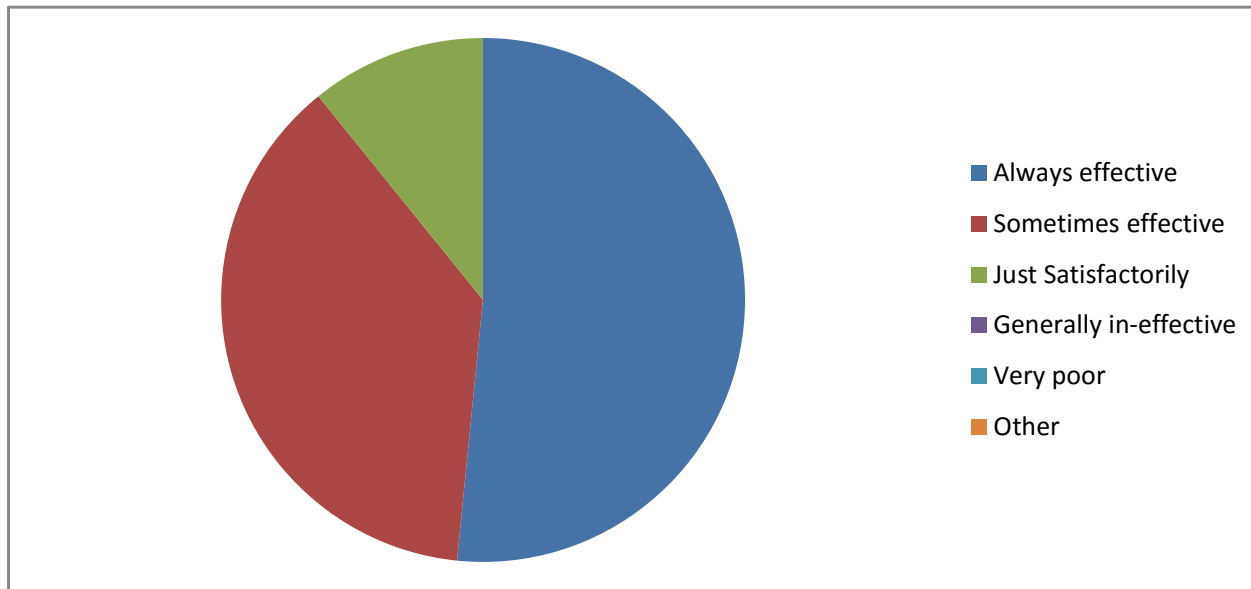
6. How well did the teacher prepare for the classes?

Thoroughly	Satisfactorily	Poorly	In Differently	Wont Teach at all
186	114	14	0	0



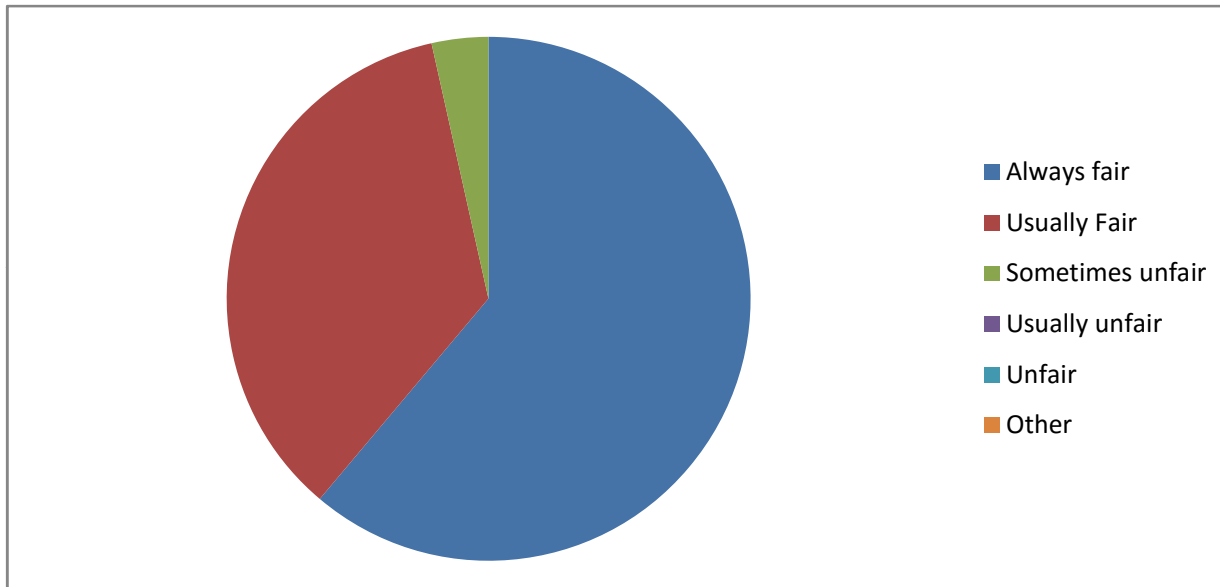
7. How well were the teachers able to communicate?

Always effective	Sometimes effective	Just Satisfactorily	Generally in-effective	Very poor	Other
162	118	34	0	0	



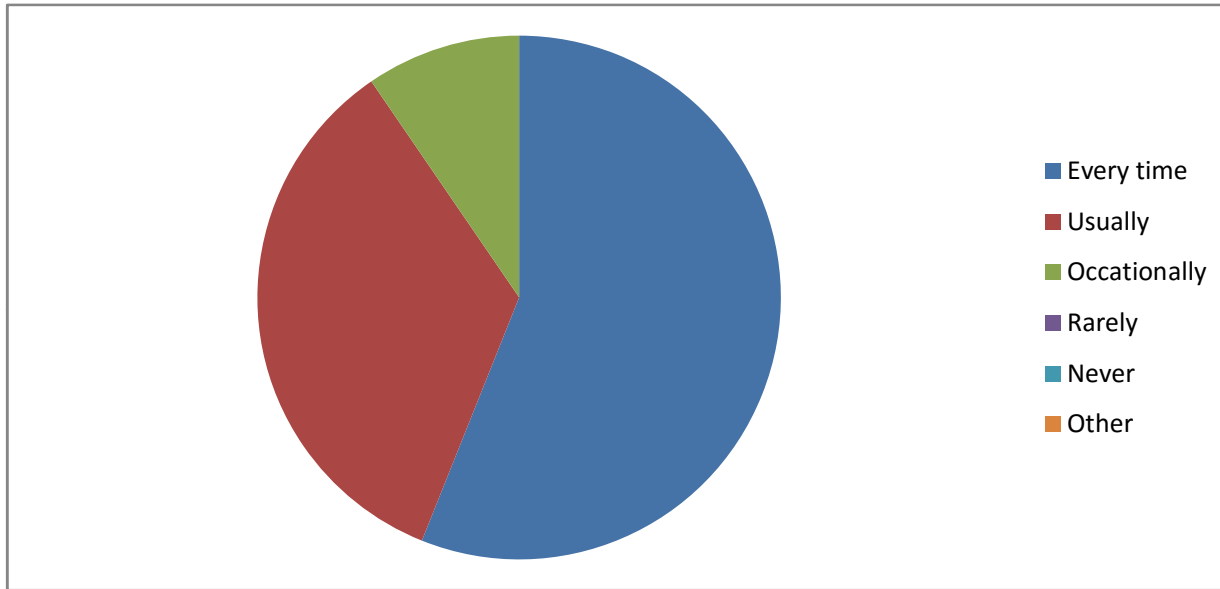
8. Fairness of the internal evaluation process by the teachers?

Always fair	Usually Fair	Sometimes unfair	Usually unfair	Unfair	Other
192	111	11	0	0	0



9. Was your performance in assignments discussed with you?

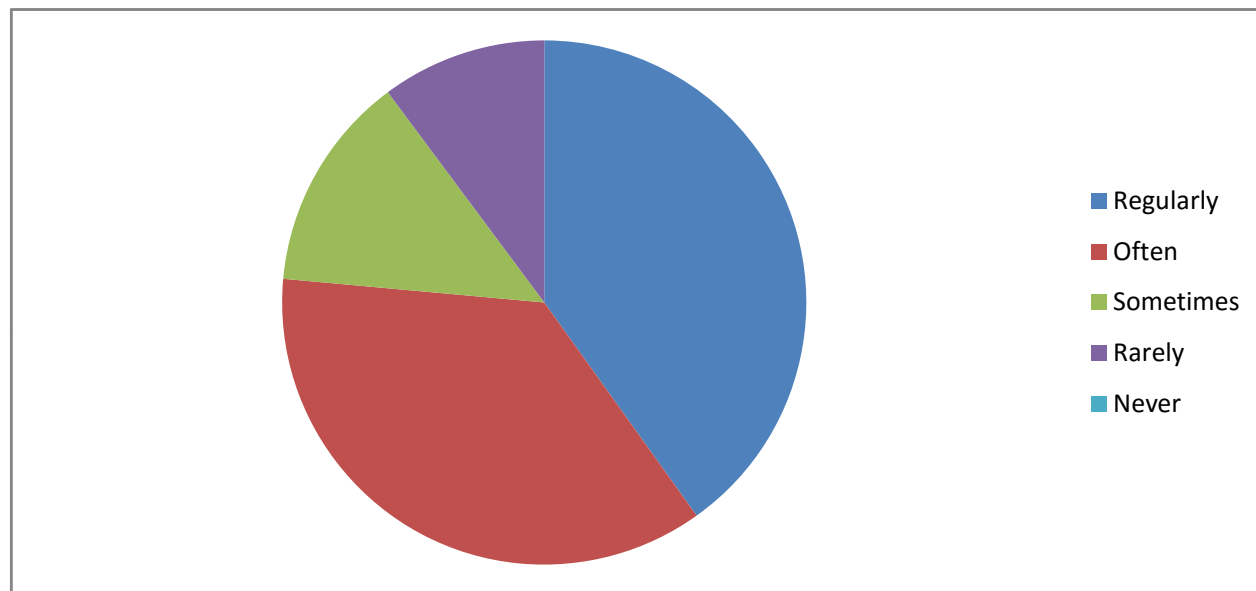
Every time	Usually	Occasionally	Rarely	Never	Other
176	108	30	0	0	0





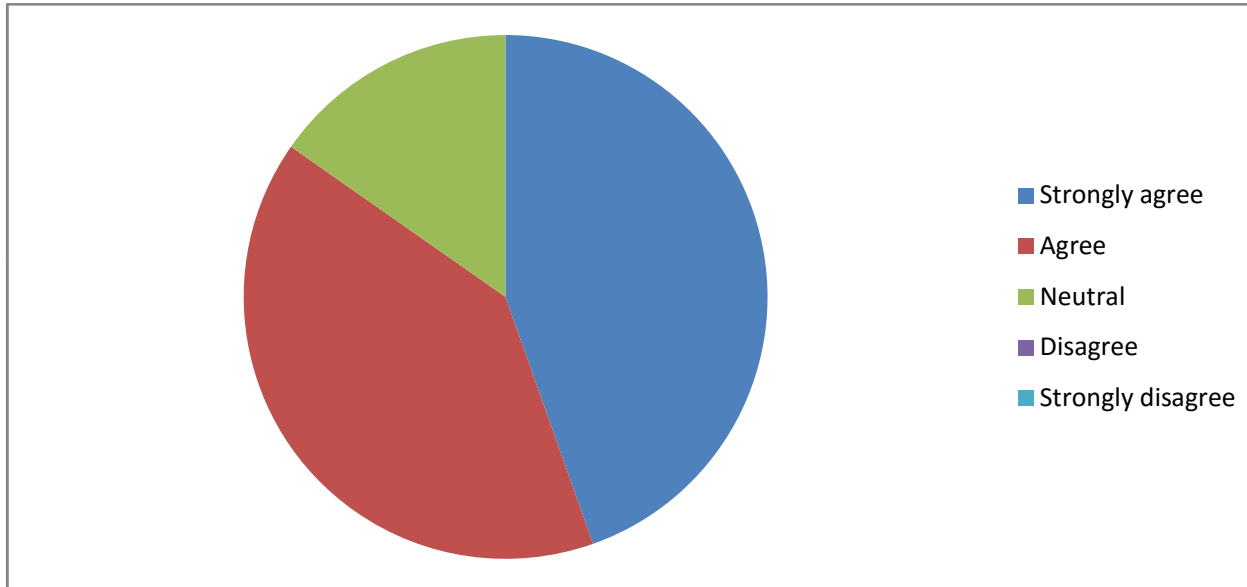
10. The University takes an active interest in promoting internship and field visit opportunities for students?

Regularly	Often	Sometimes	Rarely	Never
126	114	42	32	0



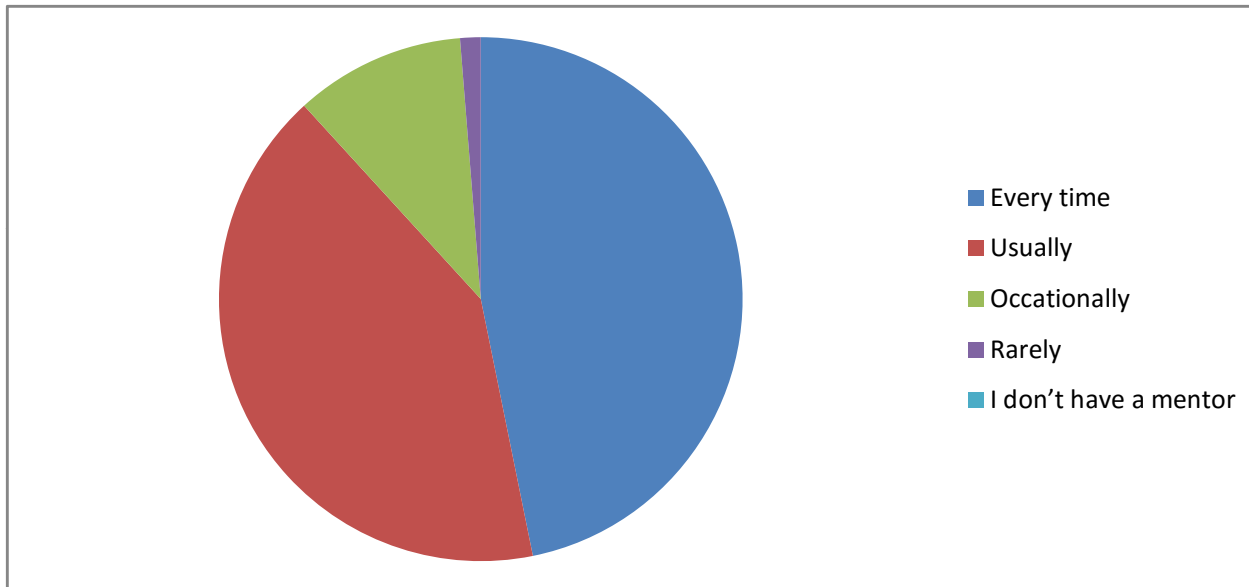
11. The Institution provides multiple opportunities to learn and grow?

Strongly agree	Agree	Neutral	Disagree	Strongly disagree
140	126	48	0	0



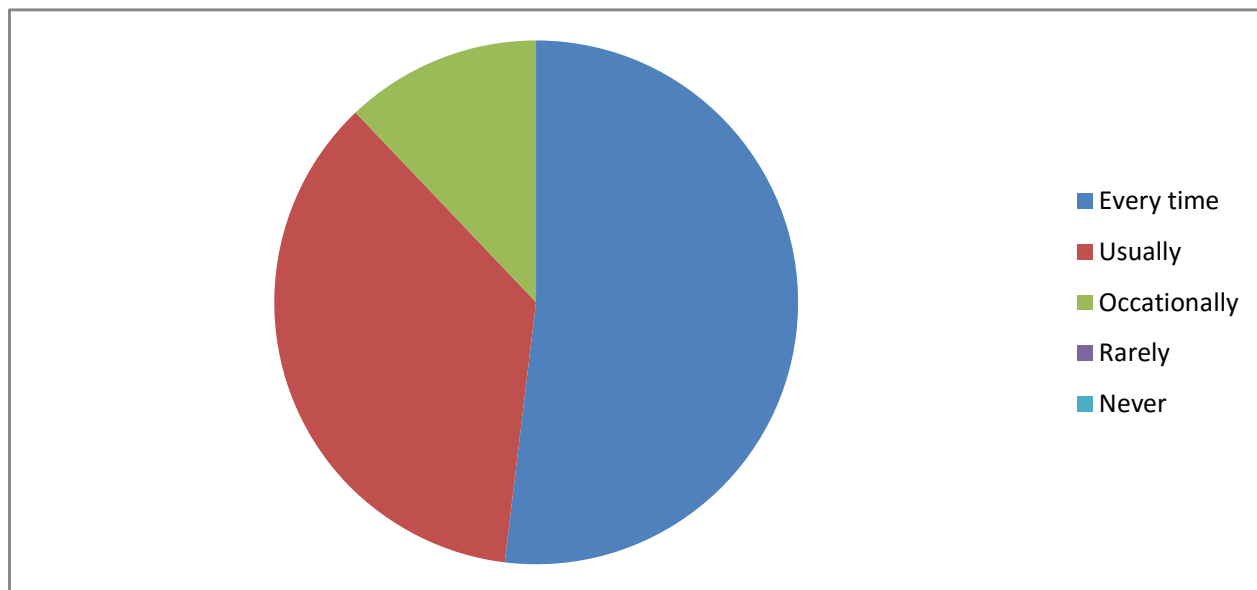
12. Your mentor/teacher does a necessary follow-up with an assigned task to you?

Every time	Usually	Occasionally	Rarely	I don't have a mentor	
147	130	33	4	0	



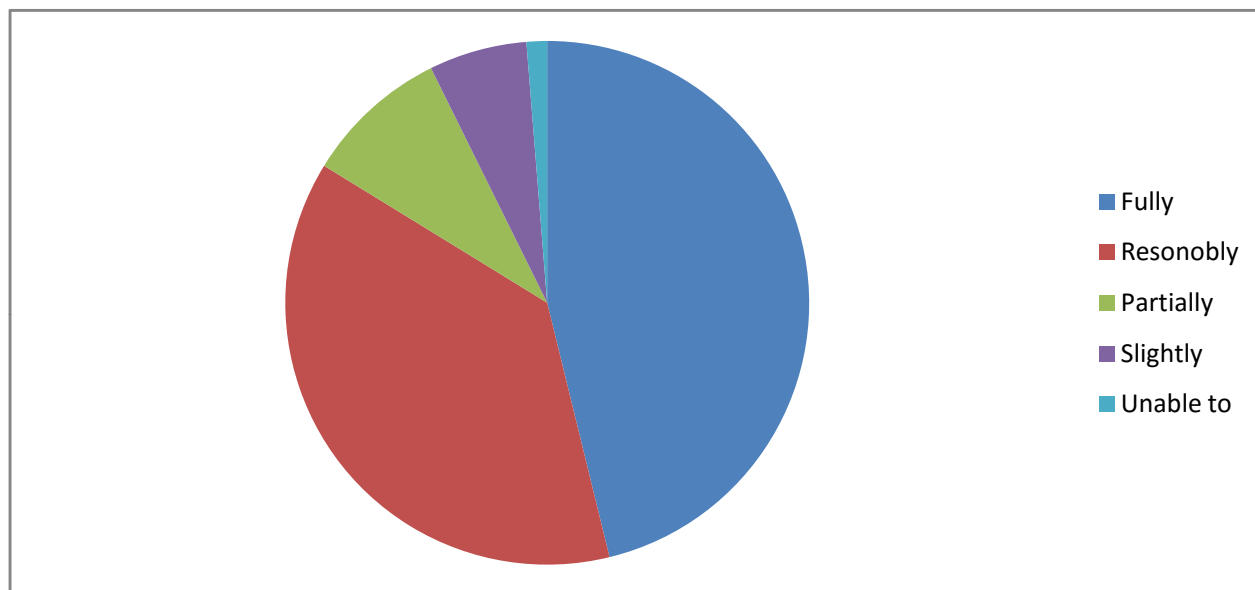
13. The Teachers illustrate the concepts emamples and applications?

Every time	Usually	Occationally	Rarely	Never
163	113	38	0	0



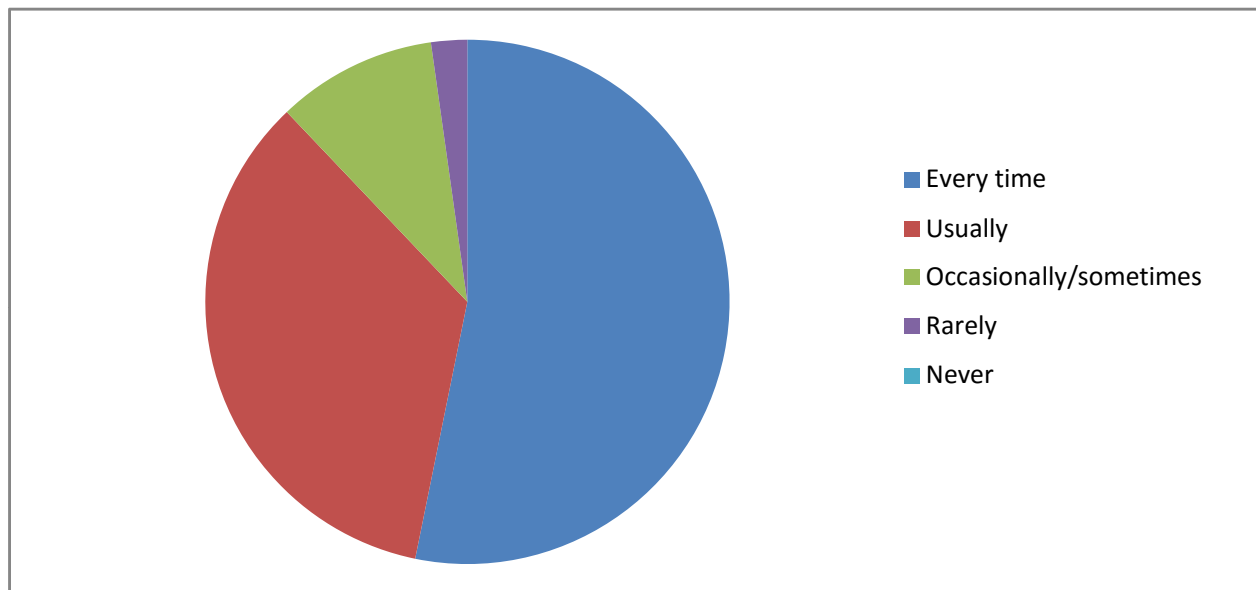
14. The teachers identify your strengths and encourage you with providing the right level of challenges?

Fully	Resonably	Partially	Slightly	Unable to
145	118	28	19	4



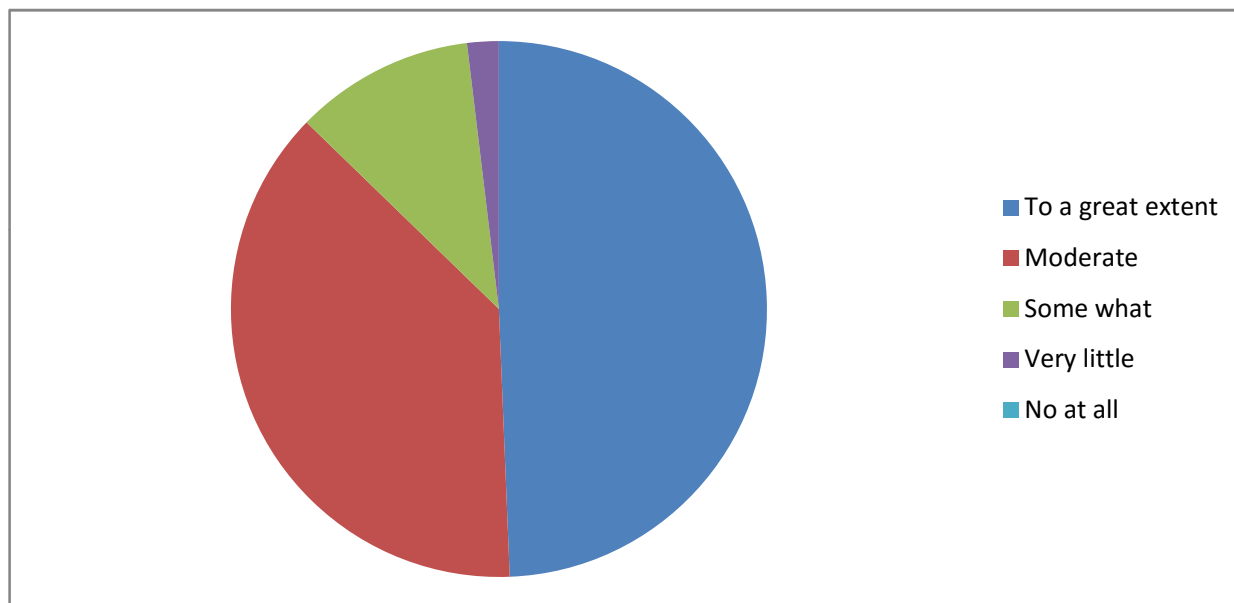
15. Teachers are able to identify your weaknesses and help you to overcome them?

Every time	Usually	Occasionally/sometimes	Rarely	Never
167	109	31	7	0



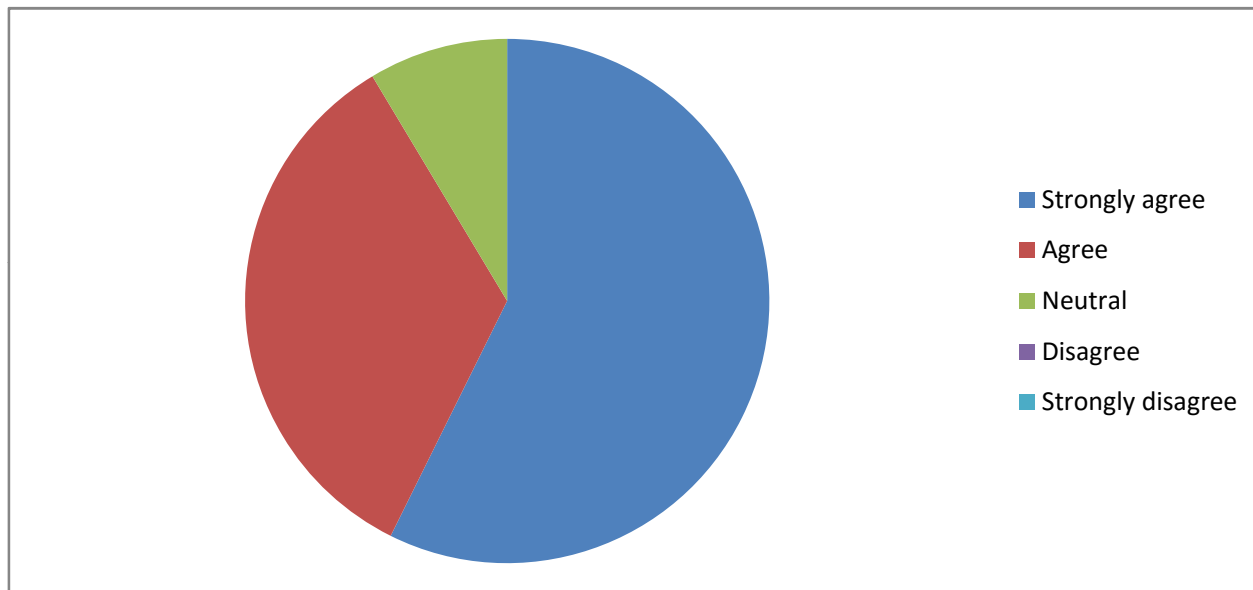
16. The institute/teachers use student-centric methods, such as experimental learning, participative learning, problem-solving methodologies for enhancing learning experiences?

To a great extent	Moderate	Some what	Very little	No at all
155	119	34	6	0



17. Teachers encourage you to participate in extracurricular activities?

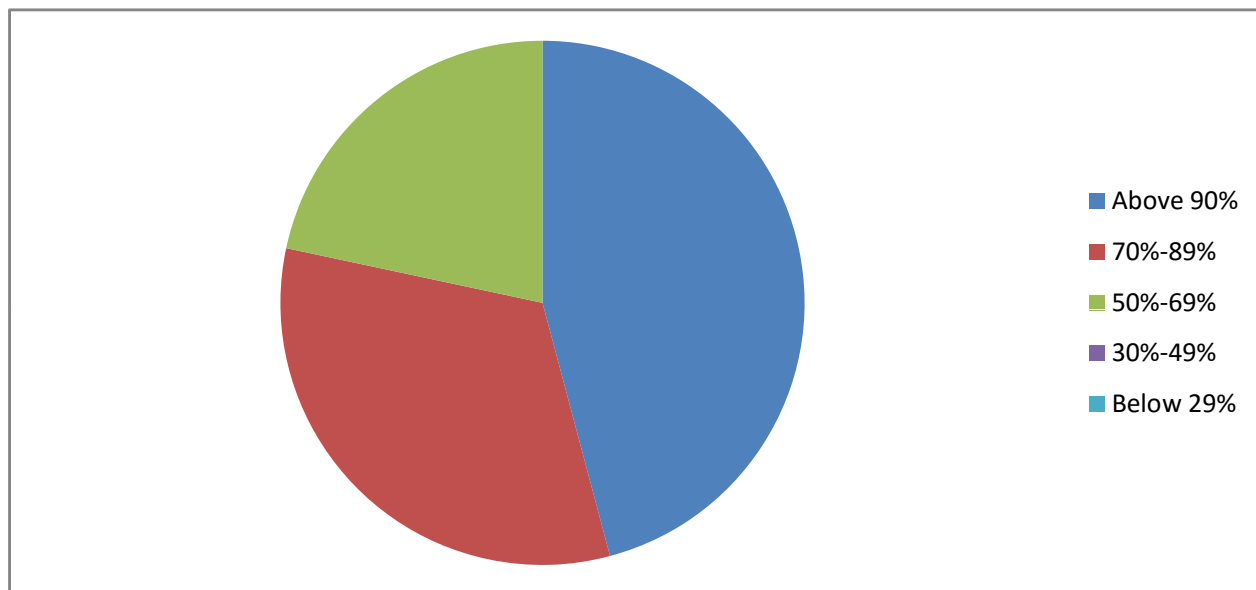
Strongly agree	Agree	Neutral	Disagree	Strongly disagree
180	107	27	0	0





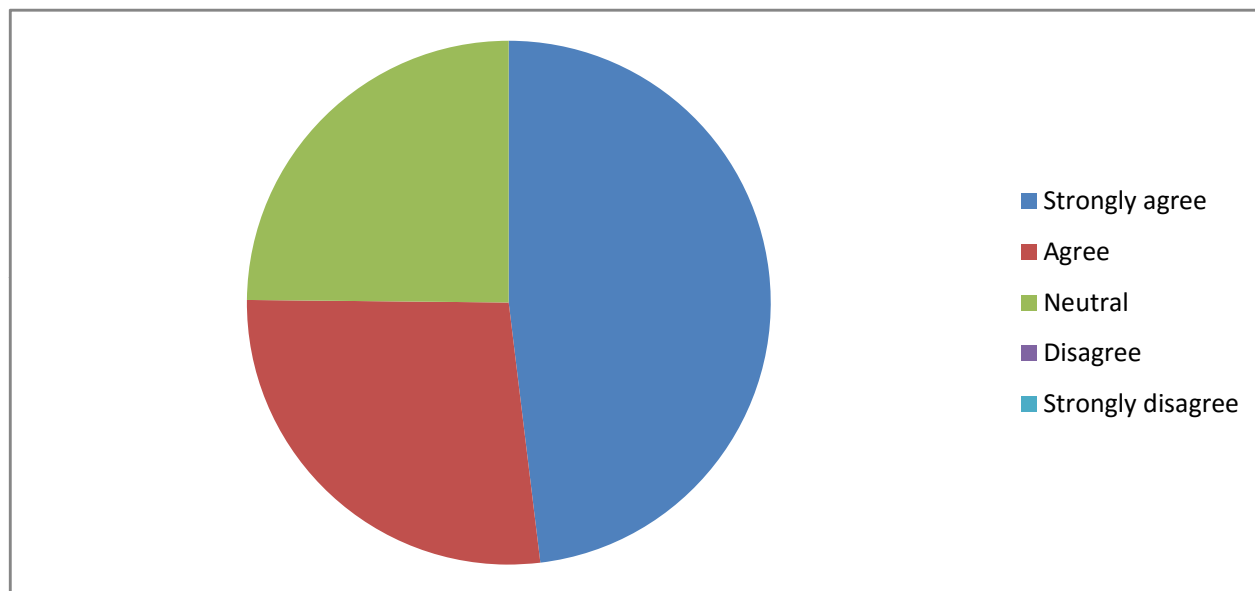
18. What percentage of teachers use ICT tools such as LCT Projector, Multimedia, etc., while teaching.

Above 90%	70%-89%	50%-69%	30%-49%	Below 29%
144	102	68	0	0



19. The overall quality of the teaching-learning process in your institute is very good?

Strongly agree	Agree	Neutral	Disagree	Strongly disagree
151	85	78	0	0



20. Give observations/suggestions to improve the overall Teaching-learning experience in your institution

Very good; Satisfactory; Increase library timings; We want Study tours; Thankyou for solving our earlier request regarding Office issues.....; Good to be a part of NSS volunteer..;