

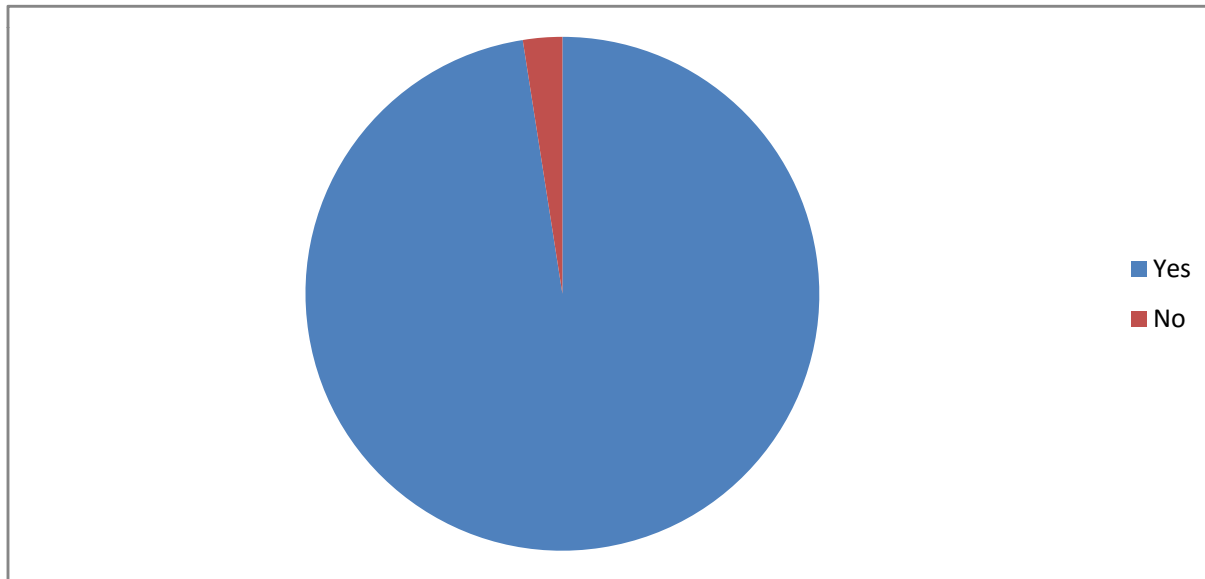
## Students Satisfaction Survey : 283 responses received for 2017-18

1. Year of Course enrolment/completion at Yogi Vemana University?

Enrolment	Completion
2016-17	2017-18

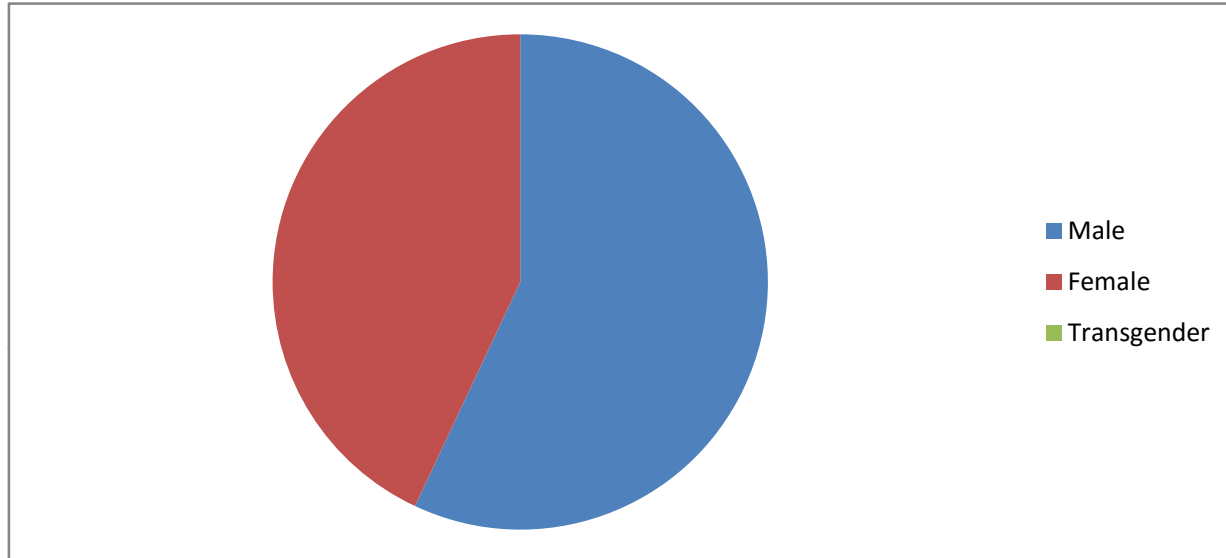
2. Confirm this is first and only time you answer this survey?

Yes	No
276	7



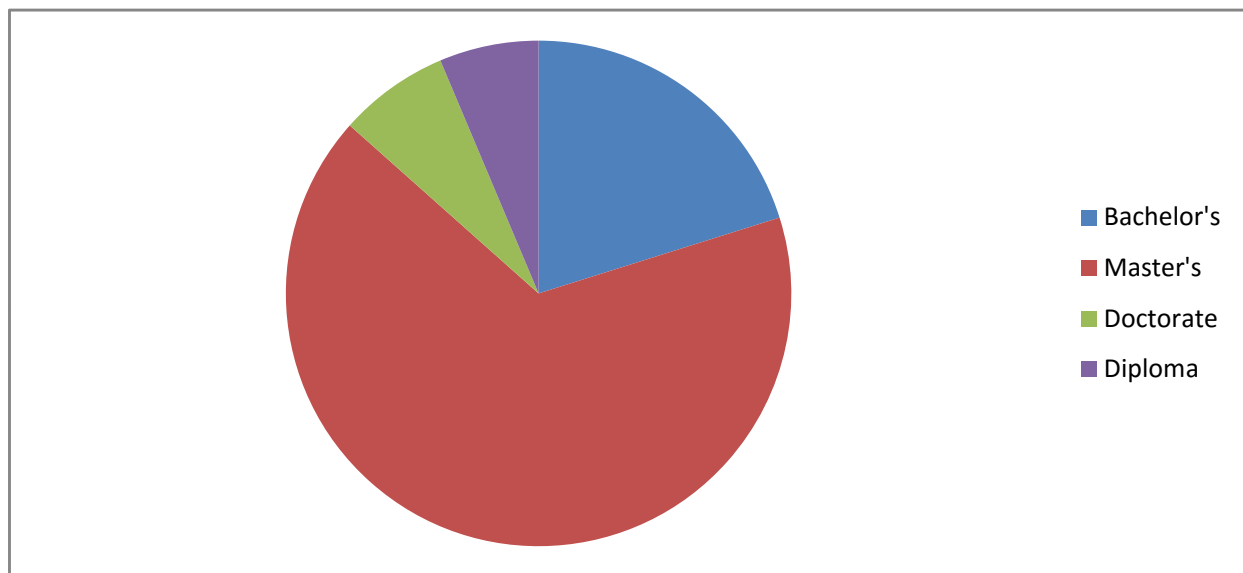
### 3. Gender?

Male	Female	Transgender
216	163	0



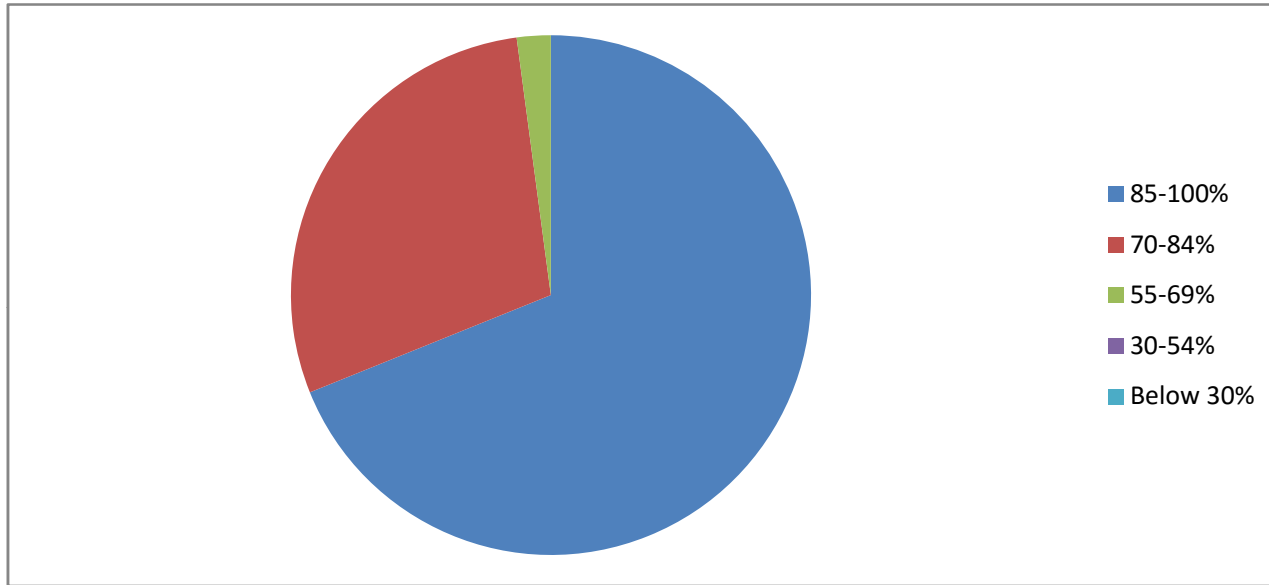
#### 4. Degree studied in the University?

Bachelor's	Master's	Doctorate	Diploma
57	188	20	18



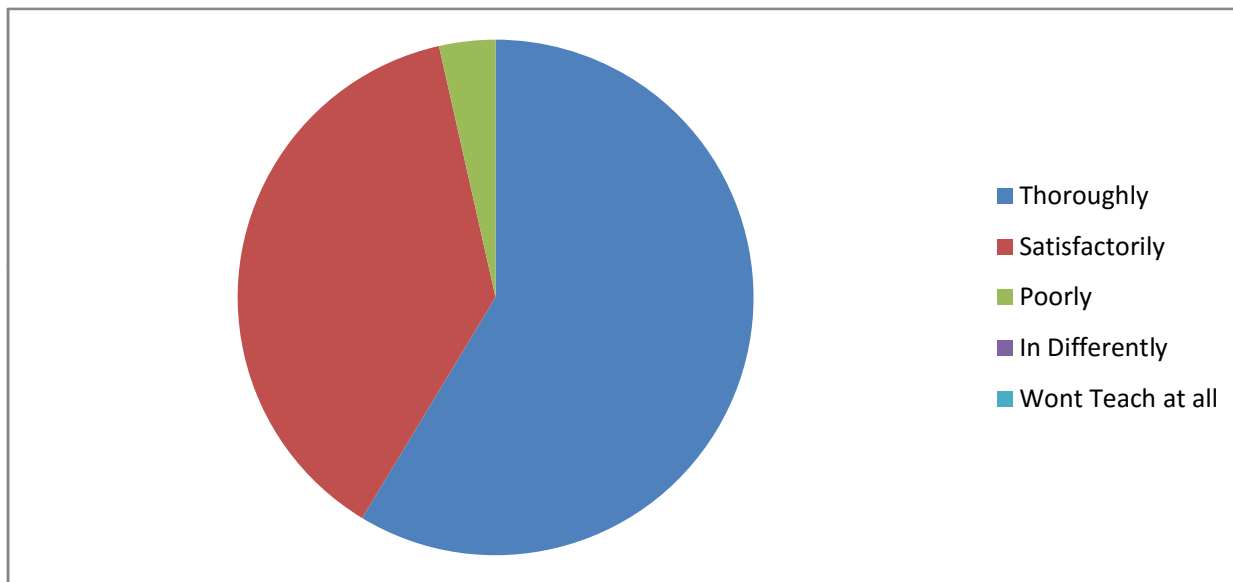
5. How much syllabus covered in the class?

85-100%	70-84%	55-69%	30-54%	Below 30%
195	82	6	0	0



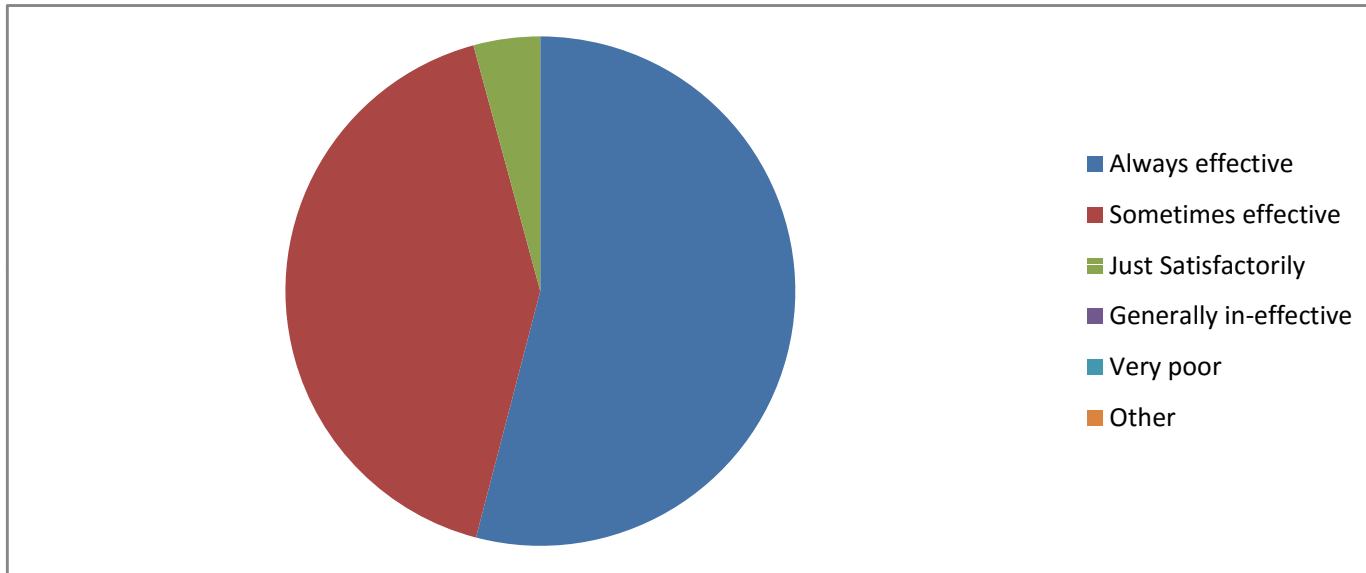
6. How well did the teacher prepare for the classes?

Thoroughly	Satisfactorily	Poorly	In Differently	Wont Teach at all
166	107	10	0	0



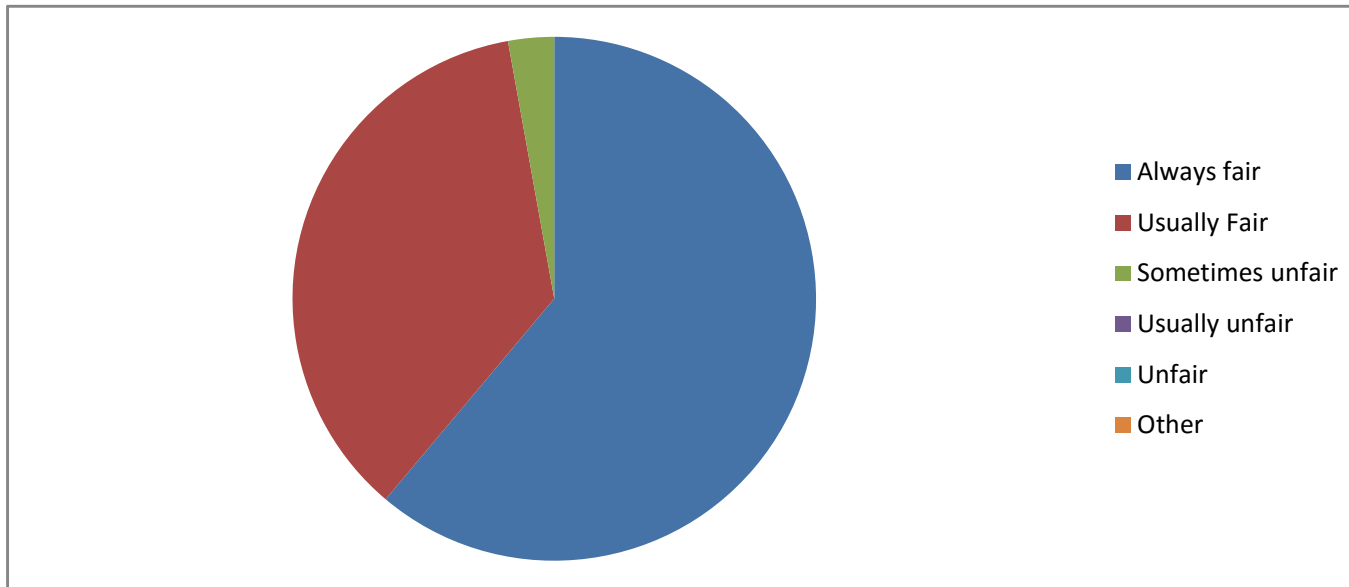
7. How well were the teachers able to communicate?

Always effective	Sometimes effective	Just Satisfactorily	Generally in-effective	Very poor	Other
153	118	12	0	0	0



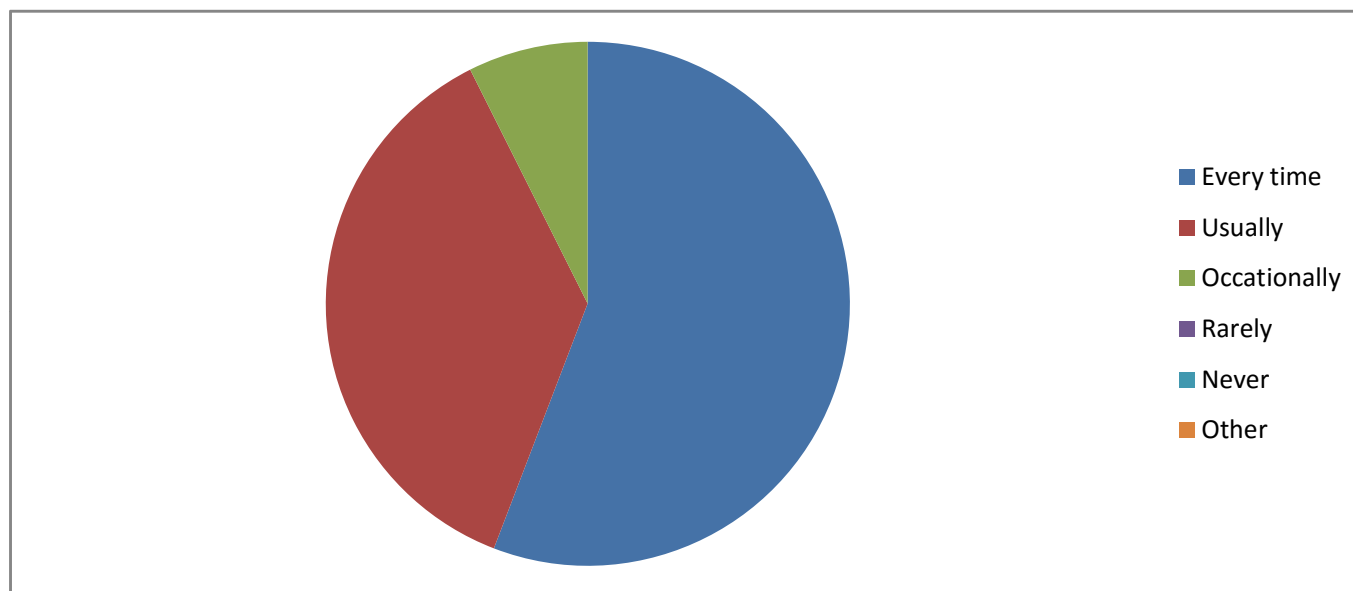
8. Fairness of the internal evaluation process by the teachers?

Always fair	Usually Fair	Sometimes unfair	Usually unfair	Unfair	Other
173	102	8	0	0	0



9. Was your performance in assignments discussed with you?

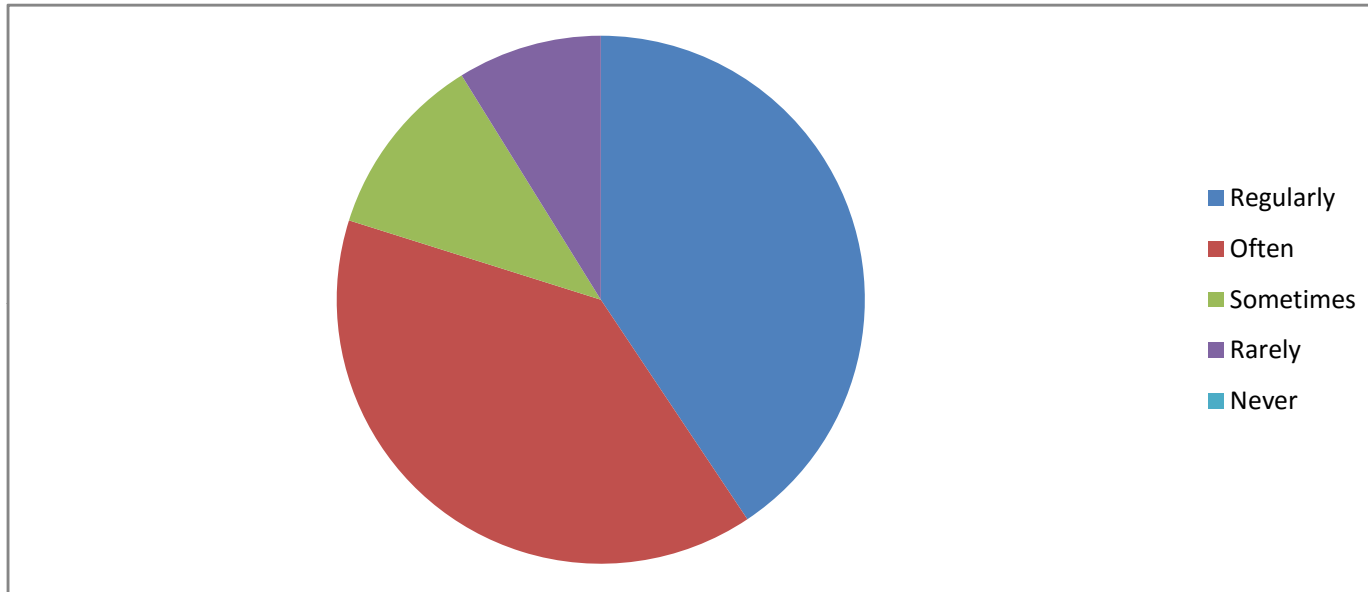
Every time	Usually	Occasionally	Rarely	Never	Other
158	104	21	0	0	0





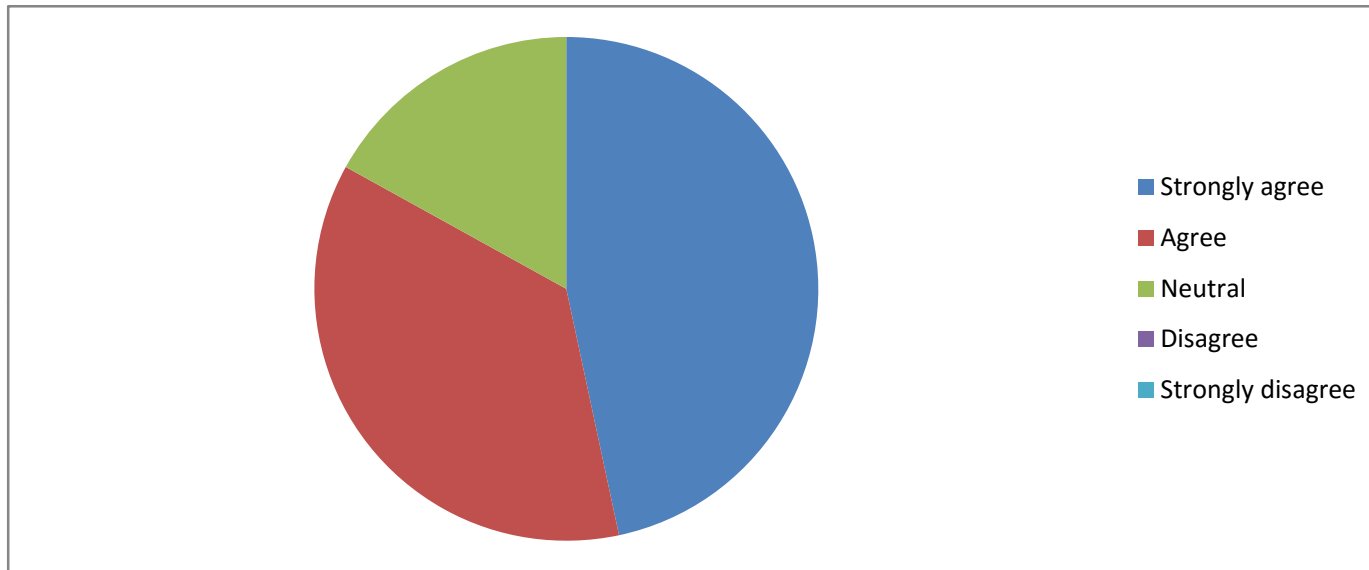
10. The University takes an active interest in promoting internship and field visit opportunities for students?

Regularly	Often	Sometimes	Rarely	Never
115	111	32	25	0



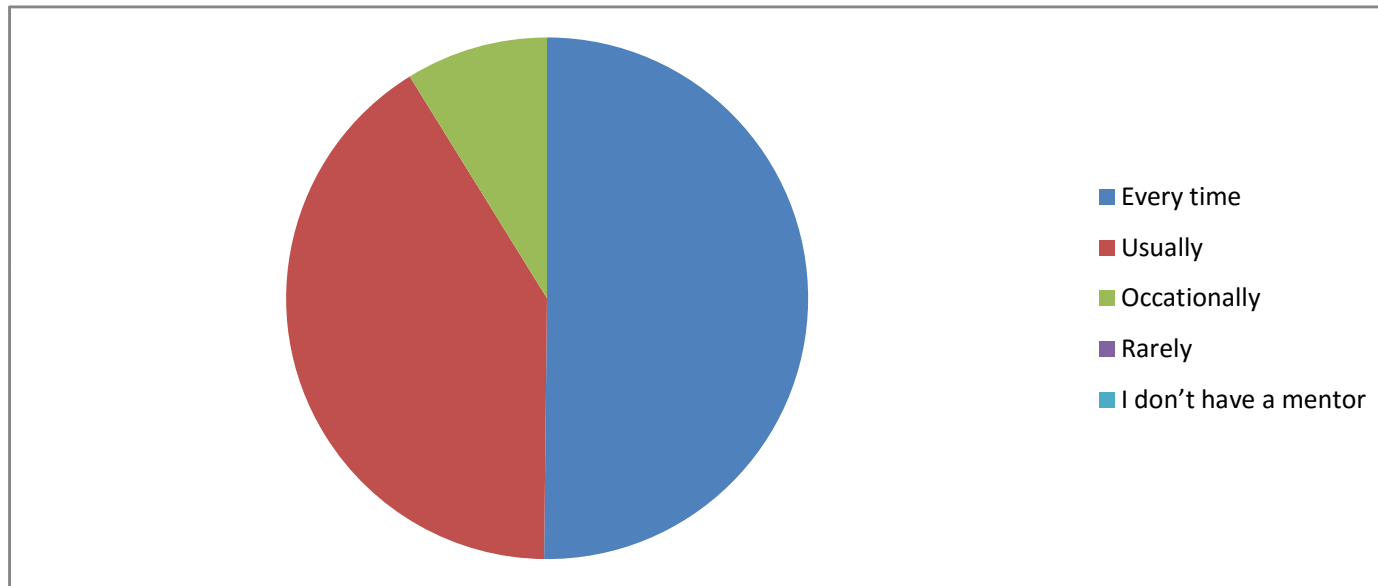
11. The Institution provides multiple opportunities to learn and grow?

Strongly agree	Agree	Neutral	Disagree	Strongly disagree
132	103	48	0	0



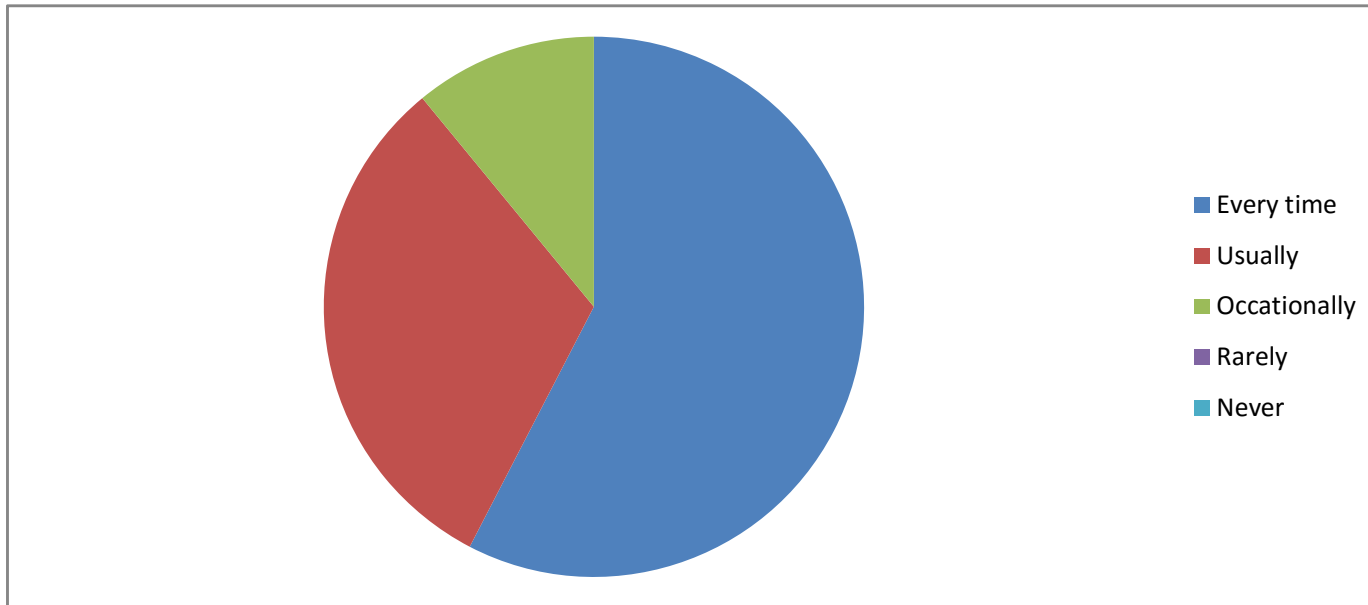
12. Your mentor/teacher does a necessary follow-up with an assigned task to you?

Every time	Usually	Occasionally	Rarely	I don't have a mentor
142	116	25	0	0



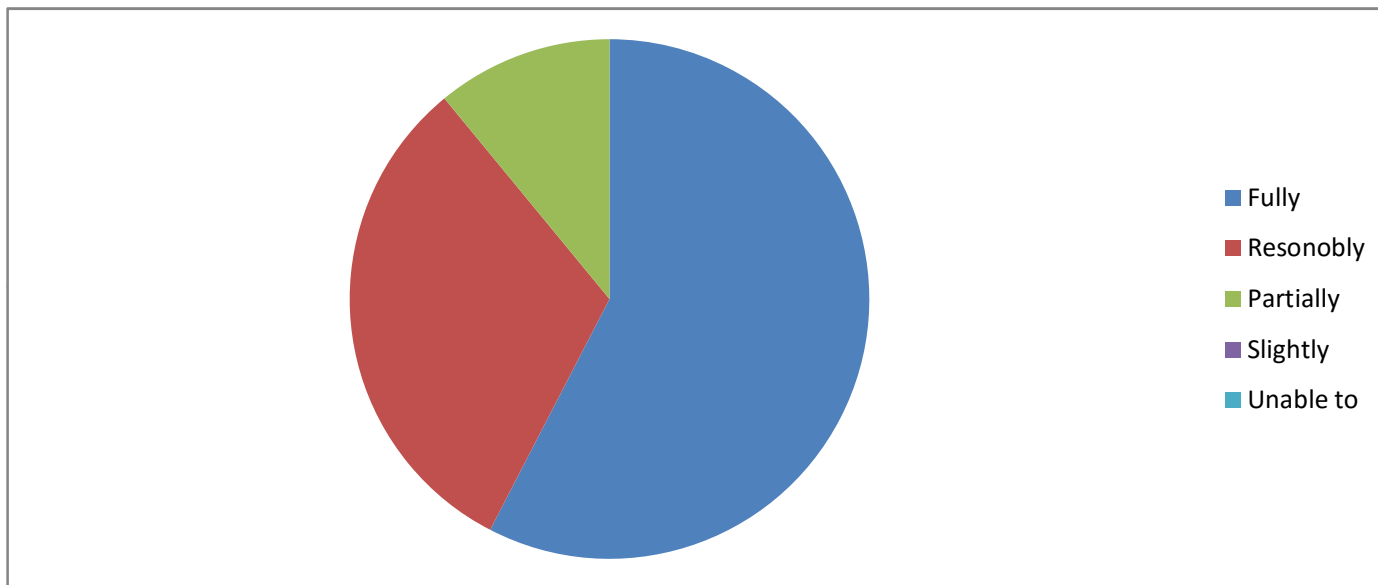
13. The Teachers illustrate the concepts emamples and applications?

Every time	Usually	Occationally	Rarely	Never
163	89	31	0	0



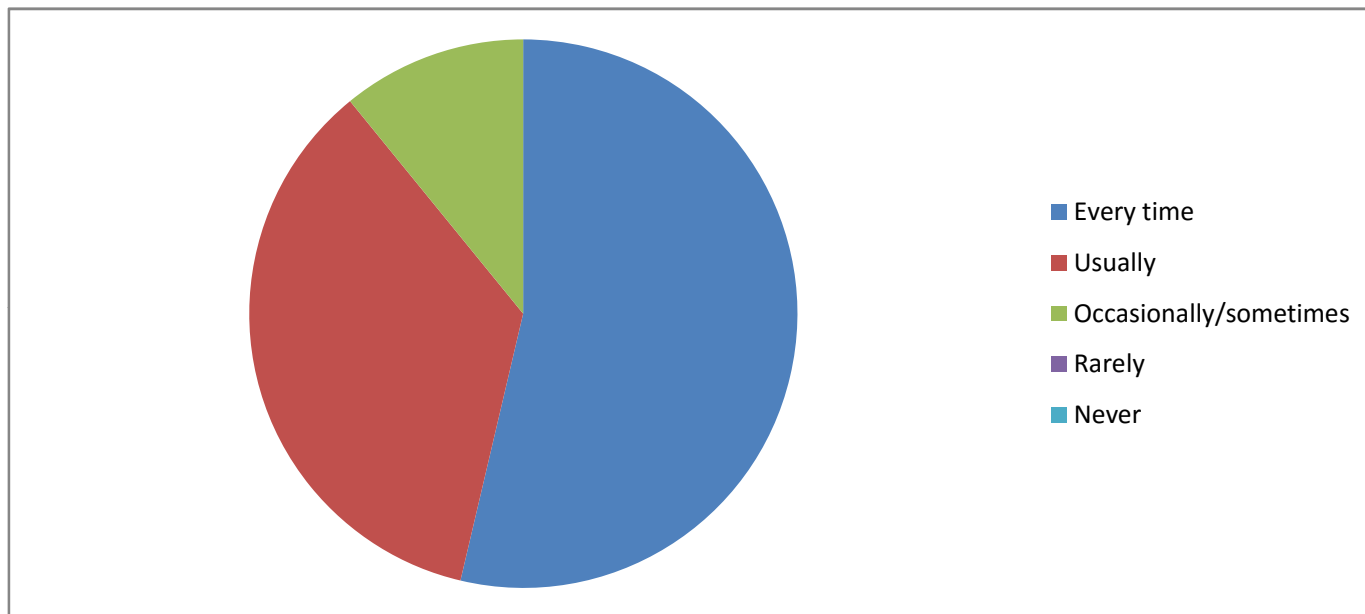
14. The teachers identify your strengths and encourage you with providing the right level of challenges?

Fully	Resonably	Partially	Slightly	Unable to
163	89	31	0	0



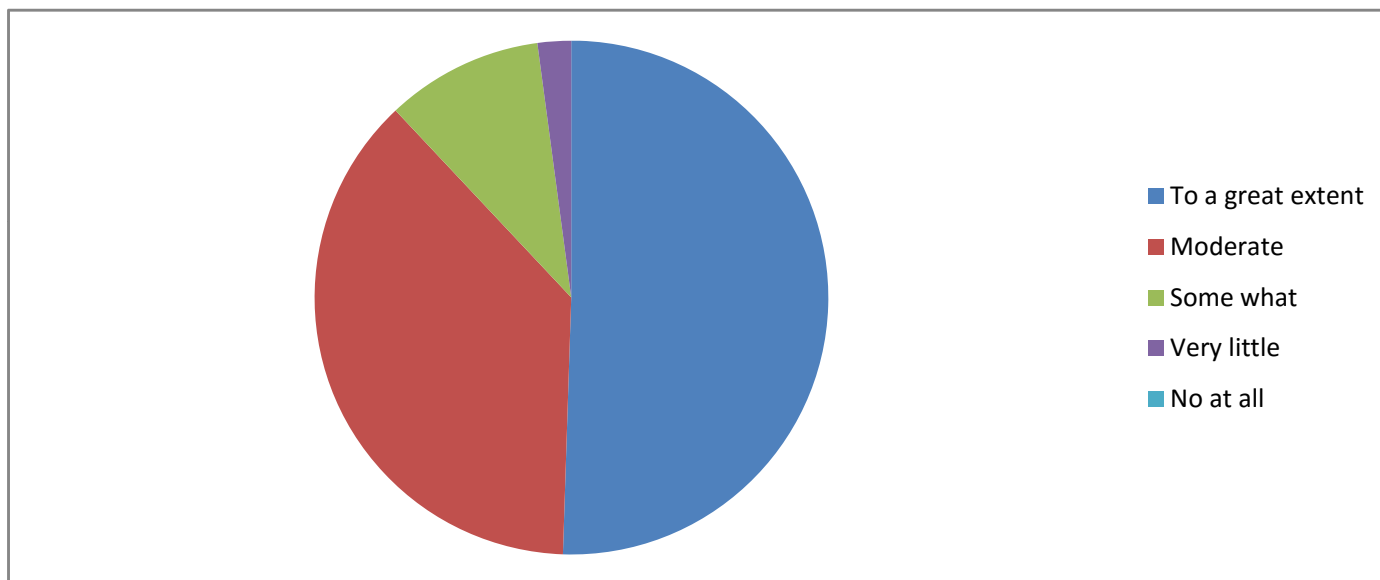
15. Teachers are able to identify your weaknesses and help you to overcome them?

Every time	Usually	Occasionally/sometimes	Rarely	Never
153	101	31	0	0



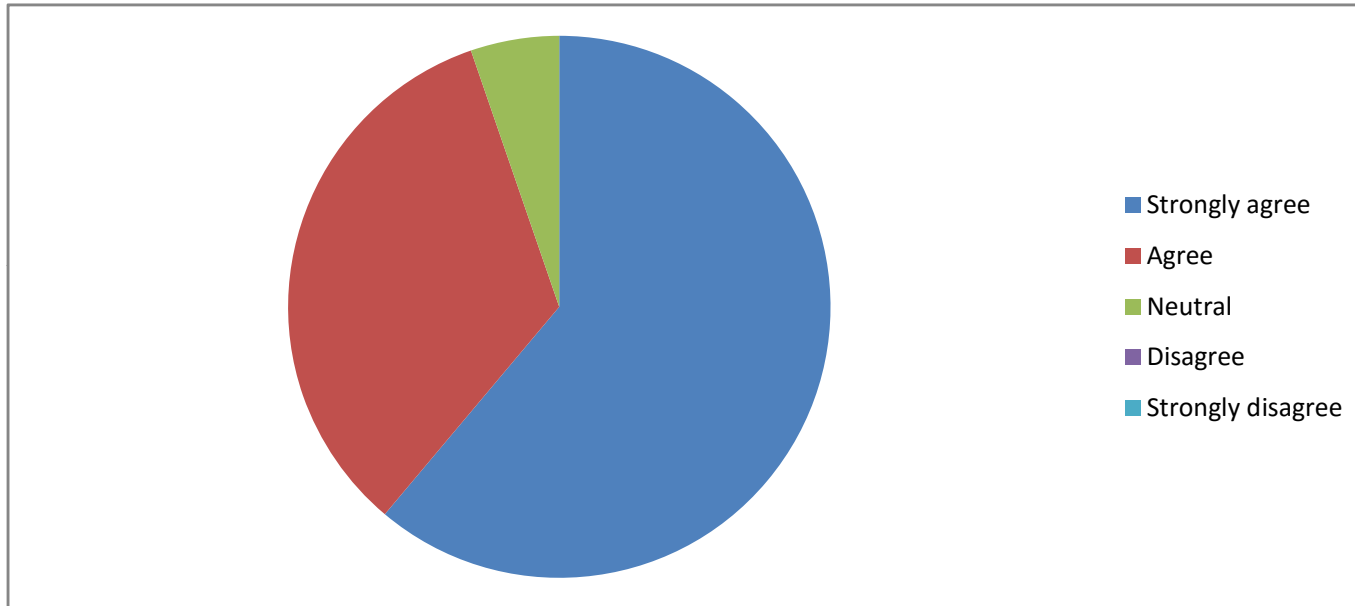
16. The institute/teachers use student-centric methods, such as experimental learning, participative learning, problem-solving methodologies for enhancing learning experiences?

To a great extent	Moderate	Some what	Very little	No at all
143	106	28	6	0



17. Teachers encourage you to participate in extracurricular activities?

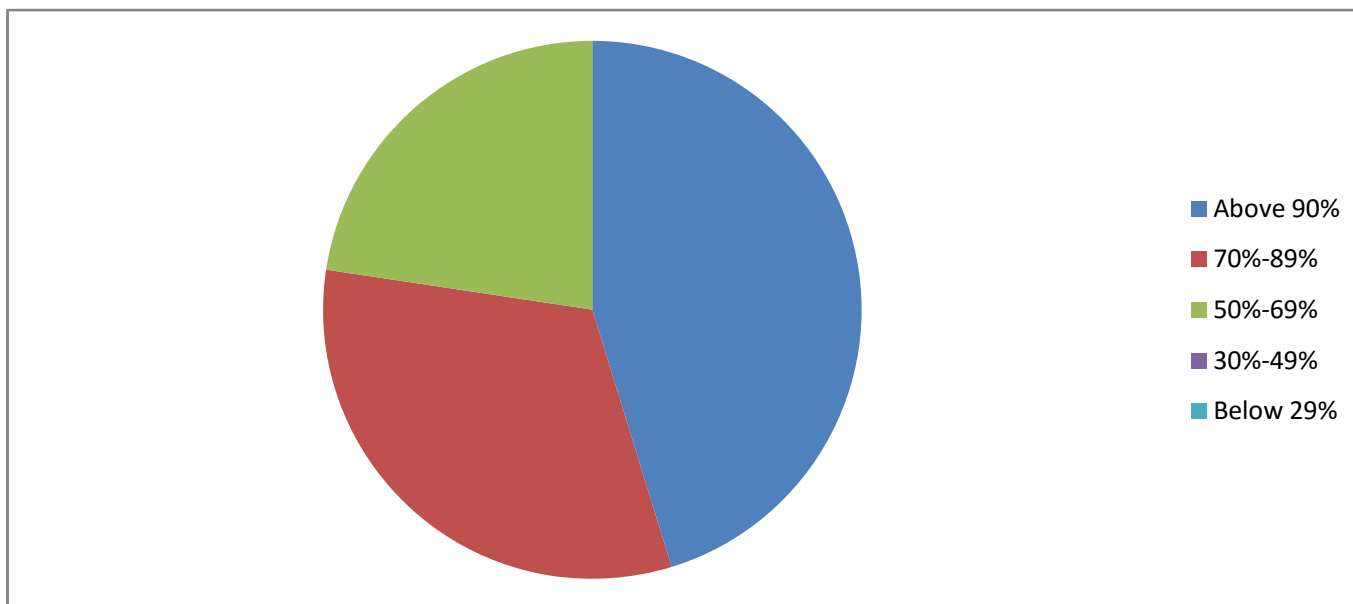
Strongly agree	Agree	Neutral	Disagree	Strongly disagree
173	95	15	0	0





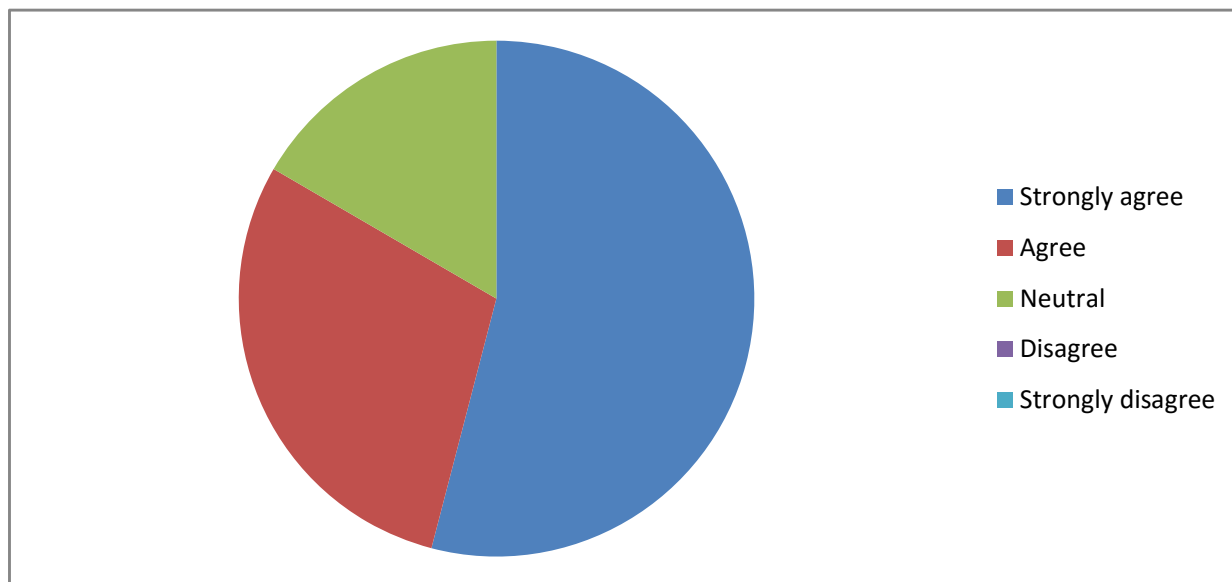
18. What percentage of teachers use ICT tools such as LCT Projector, Multimedia, etc., while teaching?

Above 90%	70%-89%	50%-69%	30%-49%	Below 29%
128	91	64	0	0



19. The overall quality of the teaching-learning process in your institute is very good?

Strongly agree	Agree	Neutral	Disagree	Strongly disagree
153	83	47	0	0



20. Give observations/suggestions to improve the overall teaching learning experience in your institution

Need more placement drives for job purposes; we students want more number of books on card; provide internet facility for students also; we want good response from office of University; Library timing should be increased; more drinking water points